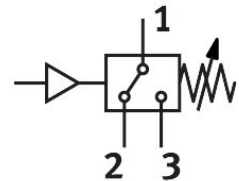
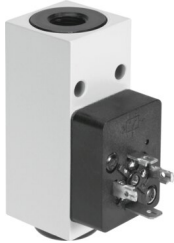


Pressure switch PEV-1/4-B-OD

Part number: 175250

FESTO



[PDF General operating condition](#)

Data sheet

Feature	Value
Conforms to standard	EN 60947-5-1
Symbol	00991471
Certification	CCC
CE marking (see declaration of conformity)	As per EU low voltage directive
UKCA marking (see declaration of conformity)	To UK instructions for electrical equipment
Explosion prevention and protection	Observe the information on the certificate Zone 1 (ATEX) Zone 2 (ATEX) Zone 21 (ATEX) Zone 22 (ATEX)
Note on materials	RoHS-compliant
Measured variable	Relative pressure
Method of measurement	Pneumatic/electric pressure transducer
Operating pressure	0.1 MPa ... 1.2 MPa
Operating pressure	1 bar ... 12 bar
Operating medium	Compressed air as per ISO 8573-1:2010 [7:-:-] Water
Information on operating and pilot media	Operation with oil lubrication possible (required for further use)
Temperature of medium	-20 °C ... 80 °C
Ambient temperature	-20 °C ... 80 °C
Switching element function	Changeover switch
Max. switching frequency	3 Hz
Max. switching output voltage AC	250 V
Max. switching output voltage DC	125 V
Max. output current	5000 mA
Minimum load current	1 mA at 24 V 10 mA at 10 V 100 mA at 5V
Utilization category for inductive load	AC-14 DC-13
Utilization category for ohmic load	AC-12 DC-12
Electrical connection	Plug as per DIN 43650 Rectangular design
Type of mounting	With through-hole
Mounting position	Any

Feature	Value
Pneumatic connection	G1/4
Product weight	194 g
Housing material	Die-cast aluminum
Switching contact material	Silver
Switching status indication	LED yellow
Setting range threshold value	1 bar ... 12 bar
Degree of protection	IP65
Corrosion resistance class (CRC)	2 - Moderate corrosion stress
LABS (PWIS) conformity	VDMA24364-B1/B2-L