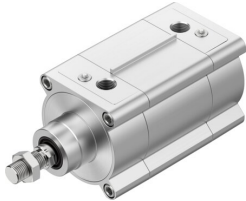


ISO cylinder DSBF-C-100-80-PPVA-N3-R

Part number: 1782256

FESTO



[PDF](#) General operating condition

Data sheet

| Feature | Value |
|------------------------------------------|--------------------------------------------------------------------|
| Stroke | 80 mm |
| Piston diameter | 100 mm |
| Piston rod thread | M20x1.5 |
| Cushioning | Pneumatic cushioning, adjustable at both ends |
| Mounting position | Any |
| Conforms to standard | ISO 15552 |
| Piston rod end | External thread |
| Structural design | Piston Piston rod Profile barrel |
| Position sensing | For proximity sensor |
| Symbol | 00991235 |
| Operating pressure | 0.04 MPa ... 1.2 MPa |
| Operating pressure | 0.4 bar ... 12 bar |
| Mode of operation | Double-acting |
| Operating medium | Compressed air as per ISO 8573-1:2010 [7:4:4] |
| Information on operating and pilot media | Operation with oil lubrication possible (required for further use) |
| Corrosion resistance class (CRC) | 3 - High corrosion stress |
| LABS (PWIS) conformity | VDMA24364-B2-L |
| Ambient temperature | -20 °C ... 80 °C |
| Impact energy in the end positions | 2.5 J |
| Cushioning length | 31 mm |
| Theoretical force at 6 bar, retracting | 4418 N |
| Theoretical force at 6 bar, advancing | 4712 N |
| Moving mass | 1357 g |
| Moving mass at 0 mm stroke | 1045 g |
| Additional moving mass per 10 mm stroke | 39 g |
| Product weight | 5399 g |
| Basic weight with 0 mm stroke | 4551 g |
| Additional weight per 10 mm stroke | 106 g |
| Type of mounting | With internal thread With accessories |
| Pneumatic connection | G1/2 |
| Note on materials | RoHS-compliant |
| Cover material | Die-cast aluminum, coated |
| Piston seal material | TPE-U(PU) |

| Feature | Value |
|-----------------------------|----------------------------------|
| Material of piston | Wrought aluminum alloy |
| Piston rod material | High-alloy stainless steel |
| Piston rod wiper material | TPE-U(PU) |
| Buffer seal material | TPE-U(PU) |
| Cushion piston material | POM |
| Material of cylinder barrel | Wrought aluminum alloy, anodized |
| Nut material | High-alloy stainless steel |
| Material of bearing | POM |
| Flange screws material | Steel, galvanized |