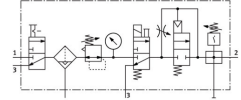


Service unit LFR-1/8-D-MINI-KG-A

Part number: 185780

FESTO



 [General operating condition](#)

Data sheet

| Feature | Value |
|---|--|
| Size | Mini |
| Series | D |
| Actuator lock | Rotary knob with detent |
| Mounting position | Vertical +/- 5° |
| Grade of filtration | 40 µm |
| Condensate drain | Fully automatic |
| Structural design | Safety start-up valve |
| Max. condensate volume | 22 ml |
| Bowl guard | Metal bowl guard |
| Symbol | 00991527 |
| Pressure gauge | with pressure gauge |
| Operating pressure | 0.3 MPa ... 1.2 MPa |
| Operating pressure | 3 bar ... 12 bar |
| Operating pressure | 43.5 psi ... 174 psi |
| Pressure regulation range MPa | 0.25 MPa ... 1.2 MPa |
| Pressure regulation range | 2.5 bar ... 12 bar |
| Pressure regulation range psi | 36.25 psi ... 174 psi |
| Max. pressure hysteresis | 0.015 MPa |
| Max. pressure hysteresis | 0.15 bar |
| Max. pressure hysteresis | 2.175 psi |
| Normal nominal flow rate (normalized to DIN 1343) | 575 l/min |
| Operating medium | Inert gas |
| Corrosion resistance class (CRC) | 2 - Moderate corrosion stress |
| LABS (PWIS) conformity | VDMA24364-B1/B2-L |
| Air quality class at the output | Compressed air as per ISO 8573-1:2010 [7:8:4] Inert gas |
| Temperature of medium | -10 °C ... 60 °C |
| Ambient temperature | -10 °C ... 60 °C |
| Product weight | 1500 g |
| Type of mounting | With accessories |
| Pneumatic connection 1 | G1/8 |
| Pneumatic connection 2 | G1/8 |
| Housing material | Die-cast zinc |
| Material of bowl | PC |