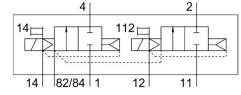


# Air solenoid valve CPV18-M1H-2X2-GLS-1/4

FESTO

Part number: 185886



[PDF](#) General operating condition

## Data sheet

| Feature                                           | Value                                                              |
|---------------------------------------------------|--------------------------------------------------------------------|
| Valve function                                    | 2x2/2 closed, monostable                                           |
| Actuation type                                    | Electrical                                                         |
| Valve size                                        | 18 mm                                                              |
| Normal nominal flow rate (normalized to DIN 1343) | 1600 l/min                                                         |
| Pneumatic working port                            | G1/4                                                               |
| Operating voltage                                 | 24V DC                                                             |
| Operating pressure                                | -0.09 MPa ... 1 MPa                                                |
| Operating pressure                                | -0.9 bar ... 10 bar                                                |
| Structural design                                 | Piston gate valve                                                  |
| Reset method                                      | Pneumatic spring                                                   |
| Certification                                     | C-Tick                                                             |
| Degree of protection                              | IP65                                                               |
| Nominal width                                     | 8 mm                                                               |
| Exhaust air function                              | Without flow control option                                        |
| Sealing principle                                 | Soft                                                               |
| Mounting position                                 | Any                                                                |
| Manual override                                   | Detenting<br>Non-detenting                                         |
| Type of control                                   | Pilot-controlled                                                   |
| Pilot air supply port                             | External<br>Internal                                               |
| Flow direction                                    | Non-reversible                                                     |
| Symbol                                            | 00991801                                                           |
| Lap                                               | Overlap                                                            |
| Pilot pressure MPa                                | 0.3 MPa ... 0.8 MPa                                                |
| Pilot pressure                                    | 3 bar ... 8 bar                                                    |
| b-value                                           | 0.41                                                               |
| C value                                           | 6.3 l/sbar                                                         |
| Switching time off                                | 20 ms                                                              |
| On switching time                                 | 14 ms                                                              |
| Duty cycle                                        | 100%                                                               |
| Electrical power consumption                      | 1.5 W                                                              |
| Operating medium                                  | Compressed air as per ISO 8573-1:2010 [7:4:4]                      |
| Information on operating and pilot media          | Operation with oil lubrication possible (required for further use) |
| Corrosion resistance class (CRC)                  | 2 - Moderate corrosion stress                                      |
| LABS (PWIS) conformity                            | VDMA24364-B1/B2-L                                                  |

| Feature                      | Value                                             |
|------------------------------|---------------------------------------------------|
| Storage temperature          | -20 °C ... 40 °C                                  |
| Temperature of medium        | -5 °C ... 50 °C                                   |
| Ambient temperature          | -5 °C ... 50 °C                                   |
| Product weight               | 260 g                                             |
| Type of mounting             | With through-hole                                 |
| Pilot air port 12/14         | Common port                                       |
| Pilot exhaust air port 82/84 | Common port                                       |
| Pneumatic connection 1       | Common port                                       |
| Pneumatic connection 11      | Common port                                       |
| Pneumatic connection 2       | G1/4                                              |
| Pneumatic port 3/5 combined  | Common port                                       |
| Pneumatic connection 4       | G1/4                                              |
| Note on materials            | RoHS-compliant                                    |
| Seals material               | HNBR<br>NBR                                       |
| Housing material             | Die-cast aluminum<br>Brass<br>POM<br>PPS<br>Steel |