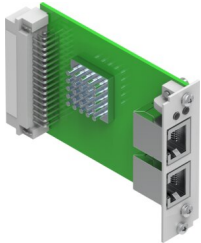


# Interface CAMC-F-EP

Part number: 1911917



 [General operating condition](#)

## Data sheet

Feature	Value
Dimensions W x L x H	19 mm x 90 mm x 65 mm
CE marking (see declaration of conformity)	As per EU EMC directive
LABS (PWIS) conformity	VDMA24364 zone III
Storage temperature	-25 °C ... 70 °C
Relative air humidity	5 - 95 % Non-condensing
Degree of protection	IP20 In mounted state
Ambient temperature	0 °C ... 50 °C
Product weight	75 g
Type of mounting	Plug-in module for CMMP-AS...-M3
Note on materials	RoHS-compliant
Mounting position	Any
Protocol	EtherNet/IP
Communication profile	FHPP
Baud rate	10/100 Mbit/s (full/half)
Topologies	Star Ring Line
Media redundancy	DLR
IP address allocation	FCT DHCP BOOTP DIL switch
Fieldbus interface	2x RJ45 socket
Minimum cycle time	1 ms
LED indicators	Ethernet communication activity Ethernet line monitoring Module status Network status
Configuration support	EDS
Parameterization	FCT
Additional functions	Integrated switch