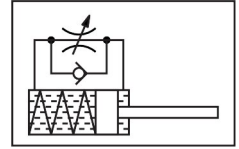


Shock absorber YSRW-7-10

Part number: 191193

FESTO



 General operating condition

Data sheet

Feature	Value
Size	7
Stroke	10 mm
Cushioning	Self-adjusting Soft characteristic curve
Mounting position	Any
Position sensing	None
Symbol	00991495
Max. impact velocity	3 m/s
Reset time at room temperature	0.2 s
Reset time at min. ambient temperature	1 s
Mode of operation	Pushing Single-acting
Corrosion resistance class (CRC)	2 - Moderate corrosion stress
LABS (PWIS) conformity	VDMA24364-B2-L
Ambient temperature	-10 °C ... 80 °C
Cushioning length	10 mm
Max. stop force	300 N
Max. energy absorption per stroke	2.5 J
Max. energy absorption per hour	15000 J
Max. residual energy	0.01 J
Resetting force	1.2 N
Min. insertion force	10 N
Product weight	18 g
Load range	5 kg
Type of mounting	With locknut
Note on materials	RoHS compliant
Seals material	NBR
Housing material	High-alloy steel
Piston rod material	High-alloy steel