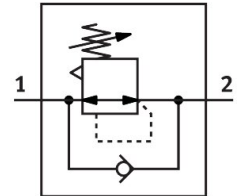


# Pressure regulator LR-1/8-D-O-I-MINI

Part number: 192304

FESTO



 [General operating condition](#)

## Data sheet

| Feature   | Value  |
|---|--|
| Size  | Mini   |
| Series  | D  |
| Actuator lock                                     | Rotary knob with detent  |
| Mounting position                                 | Any  |
| Structural design                                 | Directly controlled diaphragm regulator  |
| Controller function                               | Outlet pressure constant<br>With primary pressure compensation<br>With secondary exhausting<br>With return flow function |
| Symbol  | 00991559   |
| Pressure gauge                                    | G1/8 prepared  |
| Operating pressure                                | 0.1 MPa ... 1.6 MPa  |
| Operating pressure                                | 1 bar ... 16 bar   |
| Pressure regulation range                         | 0.5 bar ... 12 bar   |
| Max. pressure hysteresis                          | 0.02 MPa   |
| Max. pressure hysteresis                          | 0.2 bar  |
| Max. pressure hysteresis                          | 2.9 psi  |
| Normal nominal flow rate (normalized to DIN 1343) | 800 l/min  |
| Operating medium                                  | Compressed air as per ISO 8573-1:2010 [7:4:4]<br>Inert gases   |
| Information on operating and pilot media          | Operation with oil lubrication possible (required for further use)   |
| LABS (PWIS) conformity                            | VDMA24364-B1/B2-L  |
| Air quality class at the output                   | Compressed air as per ISO 8573-1:2010 [7:4:4]<br>Inert gas   |
| Temperature of medium                             | -10 °C ... 60 °C   |
| Ambient temperature                               | -10 °C ... 60 °C   |
| Product weight                                    | 300 g  |
| Type of mounting                                  | With accessories   |
| Pneumatic connection 1                            | G1/8   |
| Pneumatic connection 2                            | G1/8   |
| Note on materials                                 | RoHS-compliant   |
| Material of sub-base                              | Die-cast zinc  |
| Seals material                                    | NBR  |
| Housing material                                  | Die-cast zinc  |