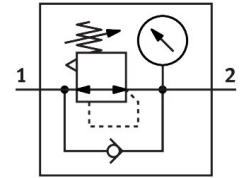



Pressure regulator LR-1/2-D-7-I-MIDI

Part number: 192315

FESTO



 General operating condition

Data sheet

Feature	Value
Size	Midi
Series	D
Actuator lock	Rotary knob with detent
Mounting position	Any
Structural design	Directly controlled diaphragm regulator
Controller function	Constant output pressure With primary pressure compensation With secondary exhausting With return flow characteristic
Symbol	00991558
Pressure gauge	with pressure gauge
Operating pressure	0 MPa ... 1.6 MPa
Operating pressure	0 bar ... 16 bar
Pressure regulation range	0.5 bar ... 7 bar
Max. pressure hysteresis	0.02 MPa
Max. pressure hysteresis	0.2 bar
Max. pressure hysteresis	2.9 psi
Normal nominal flow rate (normalized to DIN 1343)	4000 l/min
Operating medium	Compressed air as per ISO 8573-1:2010 [7:4:4] Inert gases
Information on operating and pilot media	Operation with oil lubrication possible (required for further use)
LABS (PWIS) conformity	VDMA24364-B1/B2-L
Air quality class at the output	Compressed air as per ISO 8573-1:2010 [7:4:4] Inert gases
Temperature of medium	-10 °C ... 60 °C
Ambient temperature	-10 °C ... 60 °C
Product weight	720 g
Type of mounting	With accessories
Pneumatic connection 1	G1/2
Pneumatic connection 2	G1/2
Note on materials	RoHS compliant
Material of sub-base	Die-cast zinc
Seals material	NBR
Housing material	Die-cast zinc