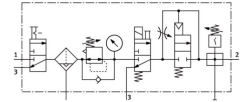


Service unit LFR-1/2-D-DI-MAXI-KG-A

Part number: 192460

FESTO



 [General operating condition](#)

Data sheet

Feature	Value
Size	Maxi
Series	D
Actuator lock	Rotary knob with detent
Mounting position	Vertical +/- 5°
Grade of filtration	40 µm
Condensate drain	Fully automatic
Structural design	Safety start-up valve
Max. condensate volume	43 ml
Bowl guard	Metal bowl guard
Symbol	00991760
Pressure gauge	with pressure gauge
Operating pressure	0.3 MPa ... 1.2 MPa
Operating pressure	3 bar ... 12 bar
Operating pressure	43.5 psi ... 174 psi
Pressure regulation range MPa	0.25 MPa ... 1.2 MPa
Pressure regulation range	2.5 bar ... 12 bar
Pressure regulation range psi	36.25 psi ... 174 psi
Normal nominal flow rate (normalized to DIN 1343)	2500 l/min
Operating medium	Inert gas
Corrosion resistance class (CRC)	2 - Moderate corrosion stress
LABS (PWIS) conformity	VDMA24364-B1/B2-L
Air quality class at the output	Compressed air as per ISO 8573-1:2010 [6:8:4] Inert gas
Temperature of medium	-10 °C ... 60 °C
Ambient temperature	-10 °C ... 60 °C
Product weight	5400 g
Type of mounting	With accessories
Pneumatic connection 1	G1/2
Pneumatic connection 2	G1/2
Housing material	Die-cast zinc
Material of bowl	PC