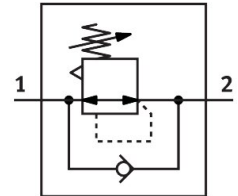


# Pressure regulator LRS-1-D-O-MAXI

Part number: 194667

FESTO



 [General operating condition](#)

## Data sheet

Feature	Value
Size	Maxi
Series	D
Actuator lock	Rotary knob with integrated lock
Mounting position	Any
Structural design	Pilot-controlled piston control valve
Controller function	Outlet pressure constant With secondary exhausting
Symbol	00991559
Pressure gauge	G1/4 prepared
Operating pressure	0 MPa ... 1.6 MPa
Operating pressure	0 bar ... 16 bar
Pressure regulation range	0.5 bar ... 12 bar
Max. pressure hysteresis	0.04 MPa
Max. pressure hysteresis	0.4 bar
Max. pressure hysteresis	5.8 psi
Normal nominal flow rate (normalized to DIN 1343)	11500 l/min
Operating medium	Compressed air as per ISO 8573-1:2010 [7:4:4] Inert gas
Information on operating and pilot media	Operation with oil lubrication possible (required for further use)
LABS (PWIS) conformity	VDMA24364-B1/B2-L
Air quality class at the output	Compressed air as per ISO 8573-1:2010 [7:4:4] Inert gas
Temperature of medium	-10 °C ... 60 °C
Ambient temperature	-10 °C ... 60 °C
Product weight	815 g
Type of mounting	With accessories
Pneumatic connection 1	G1
Pneumatic connection 2	G1
Note on materials	RoHS-compliant
Material of sub-base	Die-cast zinc
Seals material	NBR
Housing material	Die-cast zinc