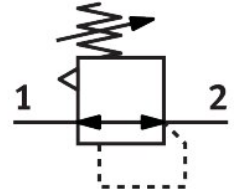


Precision pressure regulator LRPS-1/4-10

Part number: 194693

FESTO



[PDF](#) General operating condition

Data sheet

Feature	Value
Actuator lock	Rotary knob with integrated lock
Mounting position	Any
Structural design	Pilot-controlled precision diaphragm regulator
Controller function	Outlet pressure constant With secondary exhausting
Symbol	00991540
Pressure gauge	G1/8 prepared
Operating pressure	0.1 MPa ... 1.2 MPa
Operating pressure	1 bar ... 12 bar
Pressure regulation range	0.1 bar ... 10 bar
Inlet pressure 1	1 bar ... 12 bar
Max. pressure hysteresis	0.02 bar
Normal nominal flow rate (normalized to DIN 1343)	2300 l/min
Operating medium	Compressed air as per ISO 8573-1:2010 [7:4:4] Inert gas
Information on operating and pilot media	Operation with oil lubrication not possible
LABS (PWIS) conformity	VDMA24364-B1/B2-L
Temperature of medium	-10 °C ... 60 °C
Ambient temperature	-10 °C ... 60 °C
Product weight	410 g
Type of mounting	With accessories
Pneumatic connection 1	G1/4
Pneumatic connection 2	G1/4
Note on materials	RoHS-compliant
Seals material	NBR
Housing material	Aluminum