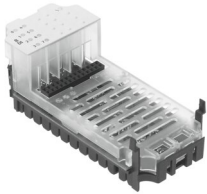


# Input module CPX-8DE

Part number: 195750

FESTO



 General operating condition

## Data sheet

Feature	Value
Dimensions W x L x H	50 mm x 107 mm x 50 mm
Product weight	39 g
Ambient temperature	-5 °C ... 50 °C
Storage temperature	-20 °C ... 70 °C
Degree of protection	Depends on manifold block
Corrosion resistance class (CRC)	(when installed)
LABS (PWIS) conformity	VDMA24364-B2-L
Housing material	PC
LED indicators	1 group diagnostics 8 channel status
Diagnostics	Short circuit/overload per channel
Parameterization	Input debounce time Signal extension time Response to short circuit Module monitoring
DC operating voltage range	18 V ... 30 V
Nominal operating voltage DC	24 V
Intrinsic current consumption at nominal operating voltage	Typ. 15 mA
No. of inputs	8
Input characteristics	IEC1131-T2
Switching level	Signal 0: $\leq 5$ V Signal 1: $\geq 11$ V
Input switching logic	PNP (positive switching)
Input debounce time	3 ms (0.1 ms, 10 ms, 20 ms parameterizable)
Max. residual current of inputs per module	1 A
Electrical isolation between channels	no
Electrical isolation between channel and internal bus	no
Fuse protection (short circuit)	Internal electronic fuse per module