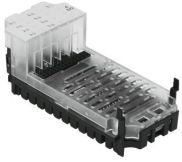


Output module CPX-4DA

Part number: 195754

FESTO



 General operating condition

Data sheet

Feature	Value
Dimensions W x L x H	50 mm x 107 mm x 50 mm
Product weight	42 g
Ambient temperature	-5 °C ... 50 °C
Storage temperature	-20 °C ... 70 °C
Degree of protection	Depends on manifold block
Corrosion resistance class (CRC)	(when installed)
LABS (PWIS) conformity	VDMA24364-B2-L
Housing material	PC
LED indicators	1 group diagnostics 4 channel diagnostics 4 channel status
Diagnostics	Short circuit/overload per channel Undervoltage of outputs
No. of outputs	4
Parameterization	Fail-safe modes per channel Forcing per channel Idle mode per channel Response to short circuit Module monitoring
DC operating voltage range	18 V ... 30 V
Nominal operating voltage DC	24 V
Intrinsic current consumption at nominal operating voltage	Typ. 16 mA
Characteristic curve outputs	Based on IEC1131-T2
Switching logic at outputs	PNP (positive switching)
Max. residual current of outputs per module	4 A
Max. power supply per channel	1 A (24 W lamp load)
Electrical isolation between channels	no
Electrical isolation between channel and internal bus	Yes, when using intermediate feed
Fuse protection (short circuit)	Internal electronic fuse per channel