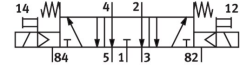


# Air solenoid valve MFH-5/3E-1/4-B

Part number: 19786

FESTO



[General operating condition](#)

## Data sheet

Feature	Value
Valve function	5/3, exhausted
Actuation type	Electrical
Width	32 mm
Normal nominal flow rate (normalized to DIN 1343)	1600 l/min
Pneumatic working port	G1/4
Operating pressure	0.3 MPa ... 1 MPa
Operating pressure	3 bar ... 10 bar
Structural design	Piston gate valve
Reset method	Mechanical spring
Nominal width	10 mm
Width dimension	33 mm
Exhaust air function	With flow control option
Sealing principle	Soft
Mounting position	Any
Manual override	Non-detenting
Type of control	Pilot-controlled
Pilot air supply port	Internal
Flow direction	Non-reversible
Symbol	00991036
Lap	Overlap
b-value	0.38
C value	6.35 l/sbar
Max. switching frequency	3 Hz
Switching time off	32 ms
On switching time	23 ms
Changeover time	37 ms
Max. positive test pulse with 0 signal	2200 µs
Max. negative test pulse on 1 signal	3700 µs
Operating medium	Compressed air as per ISO 8573-1:2010 [7:4:4]
Information on operating and pilot media	Operation with oil lubrication possible (required for further use)
Corrosion resistance class (CRC)	1 - Low corrosion stress
LABS (PWIS) conformity	VDMA24364-B1/B2-L
Storage temperature	-40 °C ... 60 °C
Temperature of medium	-10 °C ... 60 °C
Ambient temperature	-5 °C ... 40 °C
Product weight	500 g

<b>Feature</b>	<b>Value</b>
Electrical connection	Via F coil, to be ordered separately
Type of mounting	On PR rail With through-hole
Pilot exhaust air port 82	M5
Pilot exhaust air port 84	M5
Pilot air port 12	G1/8
Pilot air port 14	G1/8
Pneumatic connection 1	G1/4
Pneumatic connection 2	G1/4
Pneumatic connection 3	G1/4
Pneumatic connection 4	G1/4
Pneumatic connection 5	G1/4
Note on materials	RoHS-compliant
Seals material	NBR
Housing material	Die-cast aluminum