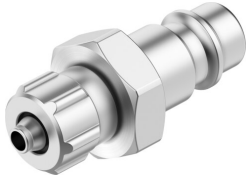


Quick coupling plug KS4-CK-4

Part number: 2150

FESTO



 General operating condition

Data sheet

Feature	Value
Nominal width	2.9 mm
Operating pressure for entire temperature range	-0.095 MPa ... 1.2 MPa
Operating pressure for entire temperature range	-0.95 bar ... 12 bar
Operating pressure for entire temperature range	-13.775 psi ... 174 psi
Normal nominal flow rate (normalized to DIN 1343)	252 l/min ... 261 l/min
Nominal flow rate standardized according to ISO 8778	273.2 l/min ... 282.9 l/min
Operating medium	Compressed air as per ISO 8573-1:2010 [7:-:-]
Information on operating and pilot media	Operation with oil lubrication possible
Corrosion resistance class (CRC)	1 - Low corrosion stress
LABS (PWIS) conformity	VDMA24364-B1/B2-L
Ambient temperature	-10 °C ... 60 °C
Product weight	26 g
Pneumatic connection 1	For pneumatic tubing outside diameter 6 mm For barbed fitting, inside diameter 4 mm, with union nut
Material of union nut	Wrought aluminum alloy, anodized
Note on materials	RoHS-compliant
Information on materials	Brass, nickel-plated