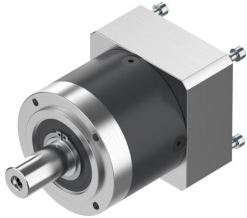


Gear unit EMGA-80-P-G5-EAS-80

Part number: 2297691

FESTO



 [General operating condition](#)

Data sheet

| Feature | Value |
|---------------------------------|------------------------|
| Gearbox flange size | 80 mm |
| Motor flange size | 80 mm |
| Torsional backlash | 0.12 deg |
| Gearbox type | Planetary gear set |
| Gear ratio | 5:1 |
| Max. actuator speed | 7000 rpm |
| Gearbox operating temperature | -25 °C ... 90 °C |
| LABS (PWIS) conformity | VDMA24364-B2-L |
| Degree of protection | IP54 |
| Continuous output torque | 110 Nm |
| Mass moment of inertia, gearbox | 0.45 kgcm ² |
| Max. output torque | 176 Nm |
| Max. efficiency | 98 % |
| Torsional rigidity | 6 Nm/arcmin |
| Product weight | 2000 g |
| Permissible axial shaft load | 1000 N |
| Permissible radial shaft load | 750 N |
| Gearbox interface, output shaft | 80G |
| Gearbox interface, actuator | 80P |
| Note on materials | RoHS compliant |