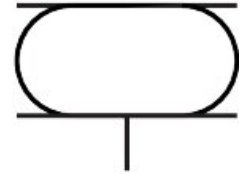



Bellow cylinder EB-80-20

Part number: 2748903

FESTO



 General operating condition

Data sheet

Feature	Value
Size	80
Required installation Ø	95 mm
Stroke	20 mm
Max. height, advanced	70 mm
Max. angle of inclination	10 deg
Max. offset	5 mm
Min. installation height	50 mm
Mounting position	Any
Mode of operation	Single-acting
Symbol	00991205
Operating pressure	0 MPa ... 0.8 MPa
Operating pressure	0 bar ... 8 bar
Operating pressure	0 psi ... 116 psi
Operating medium	Compressed air as per ISO 8573-1:2010 [-:-:4]
Information on operating and pilot media	Operation with oil lubrication not possible
Corrosion resistance class (CRC)	0 - No corrosion stress
LABS (PWIS) conformity	VDMA24364-B1/B2-L
Ambient temperature	-40 °C ... 70 °C
Resetting force	400 N
Product weight	500 g
Type of mounting	With internal thread
Pneumatic connection	G1/4
Note on materials	RoHS-compliant
Bellows material	CR
Housing material	Cast aluminum