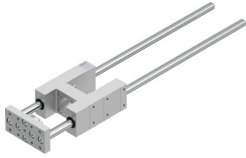


# Guide unit EAGF-V2-KF-40-400

Part number: 2783080

FESTO



 General operating condition

## Data sheet

Feature	Value
Size	40
Stroke	400 mm
Reversing backlash	0 µm
Mounting position	Any
Guide	Recirculating ball bearing guide
Structural design	Guide
Corrosion resistance class (CRC)	0 - No corrosion stress
LABS (PWIS) conformity	VDMA24364-B2-L
Ambient temperature	-20 °C ... 80 °C
Max. force F <sub>y</sub>	1000 N
Max. force F <sub>y</sub> static	1260 N
Max. force F <sub>z</sub>	1000 N
Max. force F <sub>z</sub> static	1260 N
Max. torque M <sub>x</sub>	44 Nm
Max. static moment M <sub>x</sub>	55 Nm
Max. torque M <sub>y</sub>	52 Nm
Max. static moment M <sub>y</sub>	65 Nm
Max. torque M <sub>z</sub>	52 Nm
Max. static moment M <sub>z</sub>	65 Nm
Displacement force	15 N
Moving mass	2563 g
Product weight	3797 g
Center of gravity of moving mass with 0 mm stroke	38 mm
Center of gravity of moving mass with 10 mm stroke	4.2 mm
Type of mounting	With internal thread
Note on materials	RoHS-compliant
Material of guide component	Tempered steel
Housing material	Anodized
Material of yoke plate	Steel