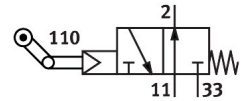


Toggle lever valve LOS-3-1/8

Part number: 2950

FESTO



[PDF General operating condition](#)

Data sheet

Feature	Value
Valve function	3/2, open, monostable
Actuation type	Mechanical
Normal nominal flow rate (normalized to DIN 1343)	175 l/min
Pneumatic working port	G1/8
Operating pressure	0.35 MPa ... 0.8 MPa
Operating pressure	3.5 bar ... 8 bar
Structural design	Plate seat
Reset method	Mechanical spring
Nominal width	3.5 mm
Exhaust air function	With flow control option
Sealing principle	Soft
Mounting position	Any
Type of control	Pilot-controlled
Pilot air supply port	Internal
Flow direction	Non-reversible
Symbol	00991118
Pilot medium	Compressed air as per ISO 8573-1:2010 [:-:-]
Note on forced dynamization	Switching frequency min. 1/year
Operating medium	Compressed air as per ISO 8573-1:2010 [:-:-]
Information on operating and pilot media	Operation with oil lubrication possible (required for further use)
Corrosion resistance class (CRC)	2 - Moderate corrosion stress
LABS (PWIS) conformity	VDMA24364-B1/B2-L
Temperature of medium	-10 °C ... 60 °C
Ambient temperature	-10 °C ... 60 °C
Actuating force	1.8 N
Product weight	110 g
Type of mounting	With through-hole
Pneumatic connection 1	G1/8
Pneumatic connection 2	G1/8
Pneumatic connection 3	G1/8
Note on materials	RoHS-compliant
Seals material	NBR
Housing material	Anodized