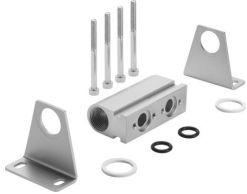


Common supply manifold PAL-1/4-2-B

Part number: 30280

FESTO



 [General operating condition](#)

Data sheet

| Feature | Value |
|-----------------------------|-----------------------|
| Mounting position | Any |
| Max. no. of valve positions | 2 |
| LABS (PWIS) conformity | VDMA24364-B1/B2-L |
| Product weight | 230 g |
| Type of mounting | With mounting bracket |
| Pneumatic connection 1 | G1/2 |
| Note on materials | RoHS-compliant |
| Material of sub-base | Aluminum Anodized |