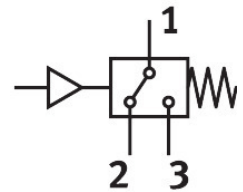
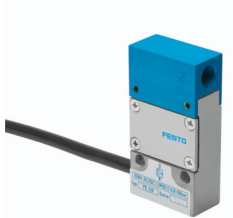


PE converter PE-1/8

Part number: 3344

FESTO



General operating condition

Data sheet

Feature	Value
Conforms to standard	EN 60947-5-1
Symbol	00991470
Certification	CCC
CE marking (see declaration of conformity)	As per EU low voltage directive
UKCA marking (see declaration of conformity)	To UK instructions for electrical equipment
Measured variable	Relative pressure
Method of measurement	Pneumatic/electric pressure transducer
Operating pressure	0.08 MPa ... 1 MPa
Operating pressure	0.8 bar ... 10 bar
Operating medium	Compressed air as per ISO 8573-1:2010 [7:4:4]
Information on operating and pilot media	Operation with oil lubrication possible
Ambient temperature	-10 °C ... 60 °C
Switching output	Contact-based
Switching function	Threshold value with fixed hysteresis
Switching element function	Changeover switch
Max. switch-on point	0.8 bar
Min. switch-off point	0.2 bar
Max. switching output voltage AC	250 V
Max. switching output voltage DC	250 V
Utilization category for inductive load	AC-14 DC-13
Utilization category for ohmic load	AC-12 DC-12
Electrical connection	4-wire Cable
Electrical connection 1, connection type	Cable
Electrical connection 1, connection technology	Open end
Cable length	1 m
Material of cable sheath	PVC
Type of mounting	With through-hole
Mounting position	Any
Pneumatic connection	G1/8
Product weight	225 g

Feature	Value
Housing material	Aluminum, anodized Die-cast zinc
Diaphragm material	Chloroprene rubber
Setting options	Permanently set
Degree of protection	IP65
Insulation voltage	2000 V
LABS (PWIS) conformity	VDMA24364-B1/B2-L
Contamination level	3