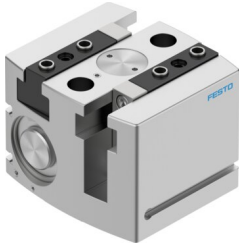


Parallel gripper HGPL-40-20-A-B

Part number: 3361487

FESTO



[PDF](#) General operating condition

Data sheet

| Feature | Value |
|--|--|
| Size | 40 |
| Stroke per gripper jaw | 20 mm |
| Max. interchangeability | <0.2 mm |
| Max. gripper jaw angular play ax, ay | <0.2 deg |
| Max. gripper jaw backlash Sz | <0.05 mm |
| Rotational symmetry | ≤0.2 mm |
| Pneumatic gripper repetition accuracy | <0.03 mm |
| Number of gripper jaws | 2 |
| Actuator system | Pneumatic |
| Mounting position | Any |
| Mode of operation | Double-acting |
| Gripper function | Parallel |
| Gripping force backup | Without |
| Structural design | Twin piston Guide Piston gate valve T-shape Gear rack/pinion |
| Position sensing | For proximity sensor |
| Symbol | 00991894 |
| Operating pressure | 3 bar ... 8 bar |
| Max. operating frequency of pneumatic gripper | <1 Hz |
| Min. opening time at 6 bar | 190 ms |
| Min. closing time at 6 bar | 180 ms |
| Max. mass per external gripper finger | 420 g |
| Operating medium | Compressed air as per ISO 8573-1:2010 [7:4:4] |
| Information on operating and pilot media | Operation with oil lubrication possible (required for further use) |
| Corrosion resistance class (CRC) | 2 - Moderate corrosion stress |
| LABS (PWIS) conformity | VDMA24364-B1/B2-L |
| Ambient temperature | 5 °C ... 60 °C |
| Gripping force per gripper jaw at 6 bar, opening | 1038 N |
| Gripping force per gripper jaw at 6 bar, closing | 1216 N |
| Gripping force per gripper jaw at 6 bar, opening | 519 N |
| Gripping force per gripper jaw at 6 bar, closing | 608 N |
| Mass moment of inertia | 27.6 kgcm ² |
| Maximum force on gripper jaw Fz, static | 2500 N |

| Feature | Value |
|--|--|
| Maximum torque on gripper jaw, Mx static | 125 Nm |
| Maximum torque on gripper jaw, My static | 80 Nm |
| Maximum torque on gripper jaw, Mz static | 100 Nm |
| Relubrication interval for guidance elements | 5 MioCyc |
| Product weight | 2560 g |
| Type of mounting | With internal thread and centering sleeve Via through-hole and centering sleeve |
| Pneumatic connection | M5 |
| Note on materials | RoHS-compliant |
| Housing material | Wrought aluminum alloy, smooth-anodized |
| Gripper jaw material | Hardened steel |