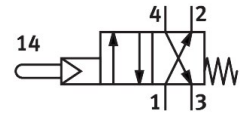


Stem actuated valve VS-4-1/8

Part number: 3394

FESTO



[PDF General operating condition](#)

Data sheet

| Feature | Value |
|---|--|
| Valve function | 4/2, monostable |
| Actuation type | Mechanical |
| Normal nominal flow rate (normalized to DIN 1343) | 140 l/min ... 147 l/min |
| Pneumatic working port | G1/8 |
| Operating pressure | 0.35 MPa ... 0.8 MPa |
| Operating pressure | 3.5 bar ... 8 bar |
| Structural design | Plate seat |
| Reset method | Mechanical spring |
| Nominal width | 3.5 mm |
| Exhaust air function | With flow control option |
| Sealing principle | Soft |
| Mounting position | Any |
| Type of control | Pilot-controlled |
| Pilot air supply port | Internal |
| Flow direction | Non-reversible |
| Symbol | 00991115 |
| Pilot medium | Compressed air as per ISO 8573-1:2010 [:-:-] |
| Note on forced dynamization | Switching frequency min. 1/year |
| Explosion prevention and protection | Zone 1 (ATEX) Zone 2 (ATEX) Zone 21 (ATEX) Zone 22 (ATEX) |
| Operating medium | Compressed air as per ISO 8573-1:2010 [:-:-] |
| Information on operating and pilot media | Operation with oil lubrication possible (required for further use) |
| Corrosion resistance class (CRC) | 2 - Moderate corrosion stress |
| LABS (PWIS) conformity | VDMA24364-B1/B2-L |
| Temperature of medium | -10 °C ... 60 °C |
| Ambient temperature | -10 °C ... 60 °C |
| Actuating force | 3.2 N |
| Product weight | 220 g |
| Type of mounting | With through-hole |
| Pneumatic connection 1 | G1/8 |
| Pneumatic connection 2 | G1/8 |
| Pneumatic connection 3 | G1/8 |
| Pneumatic connection 4 | G1/8 |
| Note on materials | RoHS-compliant |

| Feature | Value |
|------------------|----------|
| Seals material | NBR |
| Housing material | Anodized |