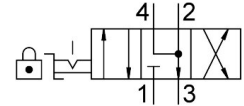


# Hand lever valve VHER-P-H-B43E-M5

Part number: 3410681

FESTO



[PDF](#) General operating condition

## Data sheet

Feature	Value
Valve function	4/3, exhausted
Actuation type	Manual
Width	37 mm
Normal nominal flow rate (normalized to DIN 1343)	170 l/min
Pneumatic working port	M5
Operating pressure	0 bar ... 10 bar
Information on operating pressure	Vacuum operation at connection 3 only In dual pressure mode, the pressure at port 1 must be higher than at port 3.
Structural design	Rotary gate valve
Nominal width	4 mm
Exhaust air function	With flow control option
Application note	Operate by hand only
Actuator lock	can be closed with accessories
Sealing principle	Hard
Type of control	Direct
Flow direction	Non-reversible
Symbol	00995945
Underlap	yes
Switching position indication	with accessories
Explosion prevention and protection	Zone 2 (ATEX) Zone 22 (ATEX)
Operating medium	Compressed air as per ISO 8573-1:2010 [7:4:4]
Information on operating and pilot media	Operation with oil lubrication possible (required for further use)
Corrosion resistance class (CRC)	2 - Moderate corrosion stress
LABS (PWIS) conformity	VDMA24364-B1/B2-L
Temperature of medium	-20 °C ... 80 °C
Ambient temperature	-20 °C ... 80 °C
Actuating torque	0.5 Nm
Product weight	95 g
Type of mounting	With through-hole
Pneumatic connection 1	M5
Pneumatic connection 2	M5
Pneumatic connection 3	M5
Pneumatic connection 4	M5
Note on materials	RoHS-compliant

<b>Feature</b>	<b>Value</b>
Seals material	NBR
Housing material	PA
Lever material	PA