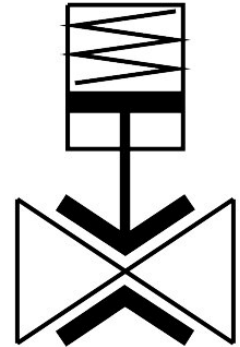


Pinch valve VZQA-C-M22C-15-S1S1-V2V4S1-2

Part number: 3412430

FESTO



[PDF](#) [General operating condition](#)

Data sheet

Feature	Value
Structural design	Pinch valve, pneumatically operated
Actuation type	Pneumatic
Sealing principle	Soft
Mounting position	Any
Type of mounting	Line installation
Fitting connection	Clamp as per ASME-BPE, type A
Nominal width DN	15
Valve function	2/2, closed, monostable
Flow direction	Reversible
Medium pressure	0 MPa ... 0.2 MPa
Medium pressure	0 bar ... 2 bar
Medium pressure	0 psi ... 29 psi
Note on the medium pressure	Use in the vacuum range was tested up to -0.09 MPa with the air at room temperature. Depending on the application, a counter-vacuum may have to be created on the control side to guarantee the media flow.
Operating pressure	0.35 MPa ... 0.6 MPa
Operating pressure	3.5 bar ... 6 bar
Operating pressure	50.75 psi ... 87 psi
Nominal pressure of fitting PN	10
Burst pressure	1.6 MPa
Burst pressure	16 bar
Burst pressure	232 psi
Reset method	Mechanical spring
Type of control	Externally controlled
Auxiliary pilot air port 12	M5
Pilot medium	Compressed air as per ISO 8573-1:2010 [7:4:1]
Symbol	00992981
Medium	Compressed air as per ISO 8573-1:2010 [:-:1] Water
Max. viscosity	4000 mm ² /s

Feature	Value
Temperature of medium	-5 °C ... 100 °C
Ambient temperature	-5 °C ... 60 °C
Storage temperature	5 °C ... 30 °C
Flow rate Kv	5 m ³ /h
On switching time	150 ms
Switching time off	250 ms
Note on materials	RoHS-compliant
LABS (PWIS) conformity	VDMA24364 zone III
Housing material	High-alloy stainless steel
Material number of housing	1.4301
Housing cover material	High-alloy stainless steel
Material no. housing cover	1.4404 / AISI 316L
Seals material	FPM
Shut-off element material	VMQ (silicone)
Product weight	611 g
For use in the food industry	See declaration of conformity
Material of bowl	PPS