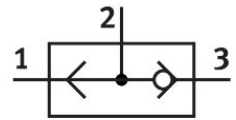


OR gate OS-1/2

Part number: 3427

FESTO



[PDF](#) General operating condition

Data sheet

Feature	Value
Valve function	OR function
Pneumatic connection 1	G1/2
Pneumatic connection 2	G1/2
Type of mounting	With through-hole
Normal nominal flow rate (normalized to DIN 1343)	5000 l/min
Operating pressure	1 bar ... 10 bar
Ambient temperature	-10 °C ... 60 °C
Operating medium	Compressed air as per ISO 8573-1:2010 [7:-:-]
Nominal width	12 mm
Symbol	00991517
Information on operating and pilot media	Operation with oil lubrication possible (required for further use)
LABS (PWIS) conformity	VDMA24364-B1/B2-L
Temperature of medium	-10 °C ... 60 °C
Pneumatic connection 3	G1/2
Note on materials	RoHS-compliant