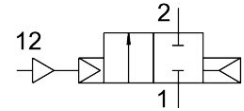


# Pneumatic valve VLX-2-1/4-MS

Part number: 34432

FESTO



[PDF](#) General operating condition

## Data sheet

Feature	Value
Structural design	Diaphragm valve
Actuation type	Pneumatic
Sealing principle	Soft
Mounting position	Any
Type of mounting	In-line installation
Fitting connection	G1/4
Nominal width	13 mm
Valve function	2/2-way, closed, monostable
Flow direction	Non-reversible
Medium pressure	1 bar ... 10 bar
Exhaust air function	Cannot be throttled
Reset method	Pneumatic spring
Type of control	Piloted
Pilot medium	Compressed air as per ISO 8573-1:2010 [7:-:-]
Symbol	00991371
Medium	Filtered compressed air, 200 µm filter mesh
Temperature of medium	-10 °C ... 80 °C
Ambient temperature	-10 °C ... 60 °C
Normal nominal flow rate (normalized to DIN 1343)	2400 l/min
LABS (PWIS) conformity	VDMA24364-B1/B2-L
Housing material	Brass
Material of screws	high-alloy stainless steel
Material number of screw	1,4301
Product weight	490 g