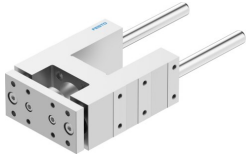


Guide unit FENG-40-100-KF

Part number: 34500

FESTO



 [General operating condition](#)

Data sheet

Feature	Value
Size	40
Stroke	100 mm
Mounting position	Any
Guide	Recirculating ball bearing guide
Structural design	Guide
Explosion prevention and protection	Observe the information on the certificate
LABS (PWIS) conformity	VDMA24364-B2-L
Ambient temperature	-20 °C ... 80 °C
Max. force F _y	1000 N
Max. force F _y static	1260 N
Max. force F _z	1000 N
Max. force F _z static	1260 N
Max. torque M _x	44 Nm
Max. static moment M _x	55 Nm
Max. torque M _y	52 Nm
Max. static moment M _y	65 Nm
Max. torque M _z	52 Nm
Max. static moment M _z	65 Nm
Displacement force	15 N
Product weight	2690 g
Type of mounting	With internal thread
Note on materials	RoHS-compliant
Material of guide component	Tempered steel
Housing material	Wrought aluminum alloy, anodized
Material of yoke plate	Wrought aluminum alloy, anodized