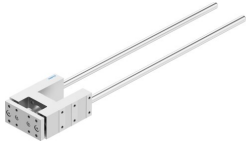


Guide unit FENG-40-500-KF

Part number: 34505

FESTO



 [General operating condition](#)

Data sheet

| Feature | Value |
|-------------------------------------|--|
| Size | 40 |
| Stroke | 500 mm |
| Mounting position | Any |
| Guide | Recirculating ball bearing guide |
| Structural design | Guide |
| Explosion prevention and protection | Observe the information on the certificate |
| LABS (PWIS) conformity | VDMA24364-B2-L |
| Ambient temperature | -20 °C ... 80 °C |
| Max. force Fy | 1000 N |
| Max. force Fy static | 1260 N |
| Max. force Fz | 1000 N |
| Max. force Fz static | 1260 N |
| Max. torque Mx | 44 Nm |
| Max. static moment Mx | 55 Nm |
| Max. torque My | 52 Nm |
| Max. static moment My | 65 Nm |
| Max. torque Mz | 52 Nm |
| Max. static moment Mz | 65 Nm |
| Displacement force | 15 N |
| Product weight | 3970 g |
| Type of mounting | With internal thread |
| Note on materials | RoHS-compliant |
| Material of guide component | Tempered steel |
| Housing material | Wrought aluminum alloy, anodized |
| Material of yoke plate | Wrought aluminum alloy, anodized |