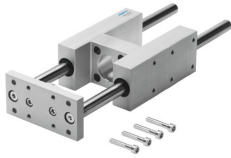


Guide unit FENG-63-160-KF

Part number: 34515

FESTO



 [General operating condition](#)

Data sheet

Feature	Value
Size	63
Stroke	160 mm
Mounting position	Any
Guide	Recirculating ball bearing guide
Structural design	Guide
Explosion prevention and protection	Observe the information on the certificate
LABS (PWIS) conformity	VDMA24364-B2-L
Ambient temperature	-20 °C ... 80 °C
Max. force F _y	1260 N
Max. force F _y static	1600 N
Max. force F _z	1260 N
Max. force F _z static	1600 N
Max. torque M _x	75 Nm
Max. static moment M _x	95 Nm
Max. torque M _y	90 Nm
Max. static moment M _y	115 Nm
Max. torque M _z	90 Nm
Max. static moment M _z	115 Nm
Displacement force	15 N
Product weight	6194 g
Type of mounting	With internal thread
Note on materials	RoHS-compliant
Material of guide component	Tempered steel
Housing material	Wrought aluminum alloy, anodized
Material of yoke plate	Wrought aluminum alloy, anodized