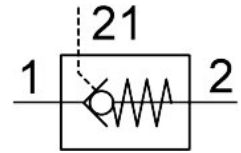


Piloted non return valve HGL-1/2-NPT

Part number: 34880

FESTO



 General operating condition

Data sheet

Feature	Value
Valve function	Unlockable check valve function
Pneumatic connection 1	1/2 NPT
Pneumatic connection 2	1/2 NPT
Type of mounting	Screw-in
Normal nominal flow rate (normalized to DIN 1343)	0 l/min ... 1600 l/min
Operating pressure	0.02 MPa ... 1 MPa
Operating pressure	0.2 bar ... 10 bar
Pilot pressure MPa	0.1 MPa ... 1 MPa
Pilot pressure	1 bar ... 10 bar
Pilot pressure psi	14.5 psi ... 145 psi
Ambient temperature	-20 °C ... 80 °C
Operating medium	Compressed air as per ISO 8573-1:2010 [7:4:4]
Symbol	00991456
Information on operating and pilot media	Operation with oil lubrication possible (required for further use)
LABS (PWIS) conformity	VDMA24364-B1/B2-L
Temperature of medium	-20 °C ... 80 °C
Note on materials	RoHS-compliant