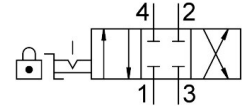


Hand lever valve VHER-P-H-B43C-B-G14

Part number: 3515601

FESTO



[PDF](#) General operating condition

Data sheet

Feature	Value
Valve function	4/3, closed
Actuation type	Manual
Width	56 mm
Normal nominal flow rate (normalized to DIN 1343)	1500 l/min
Pneumatic working port	G1/4
Operating pressure	0 bar ... 10 bar
Information on operating pressure	Vacuum operation at connection 3 only In dual pressure mode, the pressure at port 1 must be higher than at port 3.
Structural design	Rotary gate valve
Nominal width	8 mm
Exhaust air function	With flow control option
Application note	Operate by hand only
Actuator lock	can be closed with accessories
Sealing principle	Hard
Type of control	Direct
Flow direction	Non-reversible
Symbol	00995944
Underlap	yes
Switching position indication	with accessories
Explosion prevention and protection	Zone 2 (ATEX) Zone 22 (ATEX)
Operating medium	Compressed air as per ISO 8573-1:2010 [7:4:4]
Information on operating and pilot media	Operation with oil lubrication possible (required for further use)
Corrosion resistance class (CRC)	2 - Moderate corrosion stress
LABS (PWIS) conformity	VDMA24364-B1/B2-L
Temperature of medium	-20 °C ... 80 °C
Ambient temperature	-20 °C ... 80 °C
Actuating torque	2 Nm
Product weight	375 g
Type of mounting	With through-hole
Pneumatic connection 1	G1/4
Pneumatic connection 2	G1/4
Pneumatic connection 3	G1/4
Pneumatic connection 4	G1/4
Note on materials	RoHS-compliant

Feature	Value
Seals material	NBR
Housing material	PA
Lever material	PA