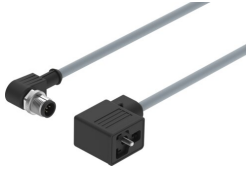


Connecting cable NEBV-B2W3-K-0.6-N-M12W3

Part number: 3579464

FESTO



 General operating condition

Data sheet

Feature	Value
Certification	c CSA us (OL)
Cable designation	Without label holder
Product weight	100 g
Electrical connection 1, function	Field device end
Electrical connection 1, design	Rectangular
Electrical connection 1, connection type	Socket
Electrical connection 1, cable outlet	Angled
Electrical connection 1, connection technology	Connection diagram form B as per industrial standard, 11 mm
Electrical connection 1, number of pins/wires	3
Electrical connection 1, occupied pins/wires	3
Electrical connection 1, type of mounting	On air solenoid valve with M3 central screw
Electrical connection for input 1, connection pattern	00995628
Electrical connection 2, function	Control side
Electrical connection 2, design	Round
Electrical connection 2, connection type	Plug
Electrical connection 2, cable outlet	Angled
Electrical connection 2, connection technology	M12x1 A-coded as per EN 61076-2-101
Electrical connection 2, number of pins/wires	5
Electrical connection 2, occupied pins/wires	3
Electrical connection 2, type of mounting	Screw-type lock with hexagon, AF 13
Electrical connection 2, connection pattern	00995711
DC operating voltage range	0 V ... 110 V
Nominal operating voltage DC	110 V
Operating voltage range AC	0 V ... 110 V
Nominal operating voltage AC	110 V
Current rating at 40° C	1 A
Surge resistance	1.5 kV
Protective earth connection	Available
Cable length	0.6 m
Cable characteristic	Standard
Connector cable test conditions	Test conditions on request
Cable diameter	5.9 mm
Cable diameter tolerance	± 0.3 mm
Cable design	3 x 0.75 mm ²
Degree of protection	IP67
Note on degree of protection	In mounted state

Feature	Value
Ambient temperature	-25 °C ... 80 °C
Ambient temperature with flexible cable installation	-25 °C ... 80 °C
CE marking (see declaration of conformity)	As per EU low voltage directive As per EU RoHS directive
UKCA marking (see declaration of conformity)	To UK RoHS instructions To UK instructions for electrical equipment
LABS (PWIS) conformity	VDMA24364 zone III
Note on materials	RoHS-compliant
Contamination level	3
Corrosion resistance class (CRC)	2 - Moderate corrosion stress
Material of cable sheath	TPE-U(PUR)
Color cable sheath	Gray
Housing material	TPE-U(PUR)
Housing colour	Black
Material of union nut	Die-cast zinc Nickel-plated
Insulating sheath material	PP