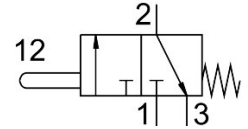


Stem actuated valve V-3-M5

Part number: 3626

FESTO



General operating condition

Data sheet

| Feature | Value |
|---|--|
| Valve function | 3/2, closed, monostable |
| Actuation type | Mechanical |
| Normal nominal flow rate (normalized to DIN 1343) | 80 l/min |
| Pneumatic working port | M5 |
| Operating pressure | -0.95 bar ... 8 bar |
| Structural design | Plate seat |
| Nominal width | 2 mm |
| Type of control | Direct |
| Symbol | 00991095 |
| Explosion prevention and protection | Zone 1 (ATEX) Zone 2 (ATEX) Zone 21 (ATEX) Zone 22 (ATEX) |
| Operating medium | Compressed air as per ISO 8573-1:2010 [:-:-] |
| Information on operating and pilot media | Operation with oil lubrication possible (required for further use) |
| LABS (PWIS) conformity | VDMA24364-B1/B2-L |
| Ambient temperature | -10 °C ... 60 °C |
| Actuating force | 23 N |
| Product weight | 25 g |
| Type of mounting | With through-hole |
| Pneumatic connection 1 | M5 |
| Pneumatic connection 2 | M5 |
| Seals material | NBR |
| Housing material | Die-cast zinc |