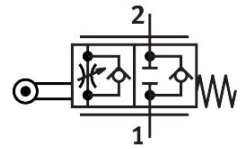


# One-way flow control valve GG-1/4-3/8

Part number: 3633

FESTO



 [General operating condition](#)

## Data sheet

Feature	Value
Valve function	Flow control non-return function
Pneumatic connection 1	G1/4
Pneumatic connection 2	G1/4
Actuation type	Mechanical
Adjusting element	Roller lever
Type of mounting	With through-hole
Standard nominal flow rate in flow control direction	870 l/min
Standard nominal flow rate in non-return direction	1150 l/min
Operating pressure	0.03 bar ... 8 bar
Operating pressure	0.43 psi ... 116 psi
Ambient temperature	-10 °C ... 60 °C
Housing material	Wrought aluminum alloy
Mounting position	Any
Symbol	00991465
Operating medium	Compressed air as per ISO 8573-1:2010 [7:-:-]
Information on operating and pilot media	Operation with oil lubrication possible (required for further use)
LABS (PWIS) conformity	VDMA24364-B2-L
Temperature of medium	-10 °C ... 60 °C
Product weight	380 g
Seals material	NBR