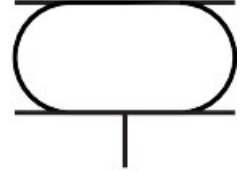


Bellow cylinder EB-250-185

Part number: 36493

FESTO



 General operating condition

Data sheet

Feature	Value
Size	250
Required installation Ø	265 mm
Stroke	185 mm
Max. height, advanced	275 mm
Max. angle of inclination	25 deg
Max. offset	20 mm
Min. installation height	75 mm
Mounting position	Any
Mode of operation	Single-acting
Symbol	00991205
Operating pressure	0 MPa ... 0.8 MPa
Operating pressure	0 bar ... 8 bar
Operating pressure	0 psi ... 116 psi
Operating medium	Compressed air as per ISO 8573-1:2010 [-:-:4]
Information on operating and pilot media	Operation with oil lubrication not possible
Corrosion resistance class (CRC)	2 - Moderate corrosion stress
LABS (PWIS) conformity	VDMA24364-B1/B2-L
Ambient temperature	-40 °C ... 70 °C
Resetting force	200 N
Product weight	3000 g
Type of mounting	With internal thread
Pneumatic connection	G3/4
Note on materials	RoHS compliant
Bellows material	NR/BR
Housing material	Steel Galvanized