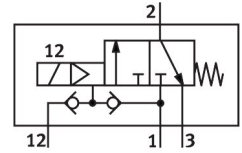


Pneumatic valve VOFC-LT-M32C-MC-G12-F19A

Part number: 4514749

FESTO



[General operating condition](#)

Data sheet

Feature	Value
Valve function	3/2, closed, monostable
Actuation type	Electrical
Width	51 mm
Normal nominal flow rate (normalized to DIN 1343)	2794 l/min
Pneumatic working port	G1/2
Operating pressure	0.2 MPa ... 0.8 MPa
Operating pressure	2 bar ... 8 bar
Operating pressure	29 psi ... 116 psi
Structural design	Pilot-controlled piston poppet valve
Reset method	Mechanical spring
Degree of protection	IP65
Certificate issuing authority	TÜV 968/V 1251.00/24
Nominal width	12 mm
Sealing principle	Hard
Mounting position	Any
Manual override	None
Type of control	Pilot-controlled
Pilot air supply port	External Internal
Flow direction	Non-reversible
Symbol	00992275
Safety function	Safe venting
Safety integrity level (SIL)	Up to SIL 3 high demand mode Up to SIL 3 low demand mode
Information on operating pressure	0 – 0.8 bar with external pilot air
Flow rate for piston valve pressurization	2.56 m ³ /h
Flow rate for piston valve exhausting	3.17 m ³ /h
Standard nominal flow rate 2-3	3466 l/min
Switching time off	14 ms
On switching time	25 ms
Explosion prevention and protection	Zone 1 (ATEX) Zone 2 (ATEX) Zone 21 (ATEX) Zone 22 (ATEX)
Operating medium	Compressed air as per ISO 8573-1:2010 [7:2:2]
Corrosion resistance class (CRC)	4 - Particularly high corrosion stress

Feature	Value
LABS (PWIS) conformity	VDMA24364 zone III
Temperature of medium	-25 °C ... 60 °C
Ambient temperature	-25 °C ... 60 °C
Product weight	880 g
Pneumatic connection 1	G1/2
Pneumatic connection 2	G1/2
Pneumatic connection 3	G1/2
Note on materials	RoHS-compliant
Seals material	NBR
Housing material	Aluminum, ematal coated