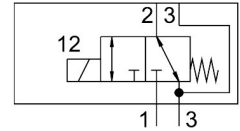


Pneumatic valve

VOFD-L50T-M32-MN-FG14-10-F10

Part number: 4514999

FESTO



[PDF](#) General operating condition

Data sheet

| Feature | Value |
|---|--|
| Valve function | 3/2, closed, monostable |
| Actuation type | Electrical |
| Width | 50.5 mm |
| Normal nominal flow rate (normalized to DIN 1343) | 493 l/min |
| Pneumatic working port | Flange 1/4 NAMUR connection diagram |
| Operating pressure | 0 MPa ... 1 MPa |
| Operating pressure | 0 bar ... 10 bar |
| Operating pressure | 0 psi ... 145 psi |
| Structural design | Directly controlled poppet valve |
| Reset method | Mechanical spring |
| Degree of protection | IP65 |
| Certificate issuing authority | TÜV 968/V 1251.02/24 |
| Nominal width | 5 mm |
| Sealing principle | Soft |
| Mounting position | Any |
| Manual override | None |
| Type of control | Direct |
| Flow direction | Reversible |
| Symbol | 00992956 |
| Safety function | Safe venting |
| Safety integrity level (SIL) | Up to SIL 3 high demand mode Up to SIL 3 low demand mode |
| Suitability for vacuum | yes |
| b-value | 0.25 |
| C value | 2 l/sbar |
| Flow rate for piston valve pressurization | 0.36 m ³ /h |
| Flow rate for piston valve exhausting | 0.36 m ³ /h |
| Standard nominal flow rate 2-3 | 429 l/min |
| Switching time off | 60 ms |
| On switching time | 40 ms |
| Explosion prevention and protection | Zone 1 (ATEX) Zone 2 (ATEX) Zone 21 (ATEX) Zone 22 (ATEX) |
| Operating medium | Compressed air as per ISO 8573-1:2010 [7:2:2] |

| Feature | Value |
|----------------------------------|--|
| Extended ambient temperature | -25 - 60 °C Low demand mode |
| Corrosion resistance class (CRC) | 4 - Particularly high corrosion stress |
| LABS (PWIS) conformity | VDMA24364 zone III |
| Temperature of medium | -25 °C ... 60 °C |
| Ambient temperature | -25 °C ... 60 °C |
| Product weight | 560 g |
| Pneumatic connection 1 | G1/4 |
| Pneumatic connection 2 | Flange 1/4 NAMUR connection diagram |
| Pneumatic connection 3 | G1/4 |
| Note on materials | RoHS-compliant |
| Seals material | NBR |
| Housing material | Aluminum, ematal coated |