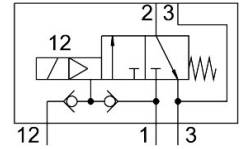
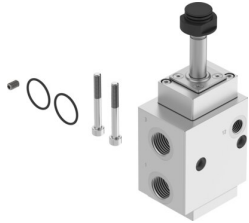


Pneumatic valve VOFC-LT-M32C-MC-FG13-F19

Part number: 4527268

FESTO



General operating condition

Data sheet

| Feature | Value |
|---|--|
| Valve function | 3/2, closed, monostable |
| Actuation type | Electrical |
| Width | 51 mm |
| Normal nominal flow rate (normalized to DIN 1343) | 2108 l/min |
| Pneumatic working port | Sub-base G1/2 |
| Operating pressure | 0.2 MPa ... 0.8 MPa |
| Operating pressure | 2 bar ... 8 bar |
| Operating pressure | 29 psi ... 116 psi |
| Structural design | Pilot-controlled piston poppet valve |
| Reset method | Mechanical spring |
| Degree of protection | IP65 |
| Certificate issuing authority | TÜV 968/V 1251.00/24 |
| Nominal width | 12 mm |
| Sealing principle | Hard |
| Mounting position | Any |
| Manual override | None |
| Type of control | Pilot-controlled |
| Pilot air supply port | External Internal |
| Flow direction | Non-reversible |
| Symbol | 00995569 |
| Safety function | Safe venting |
| Safety integrity level (SIL) | Up to SIL 3 high demand mode Up to SIL 3 low demand mode |
| Information on operating pressure | 0 – 0.8 bar with external pilot air |
| Flow rate for piston valve pressurization | 1.93 m ³ /h |
| Flow rate for piston valve exhausting | 3.07 m ³ /h |
| Standard nominal flow rate 2-3 | 3353 l/min |
| Switching time off | 14 ms |
| On switching time | 25 ms |
| Explosion prevention and protection | Zone 1 (ATEX) Zone 2 (ATEX) Zone 21 (ATEX) Zone 22 (ATEX) |
| Operating medium | Compressed air as per ISO 8573-1:2010 [7:2:2] |
| Corrosion resistance class (CRC) | 4 - Particularly high corrosion stress |

| Feature | Value |
|------------------------|--|
| LABS (PWIS) conformity | VDMA24364 zone III |
| Temperature of medium | -25 °C ... 60 °C |
| Ambient temperature | -25 °C ... 60 °C |
| Product weight | 900 g |
| Pneumatic connection 1 | G1/2 |
| Pneumatic connection 2 | Flange 1/2 NAMUR connection diagram |
| Pneumatic connection 3 | G1/2 |
| Note on materials | RoHS-compliant |
| Seals material | NBR |
| Housing material | Aluminum, ematal coated |