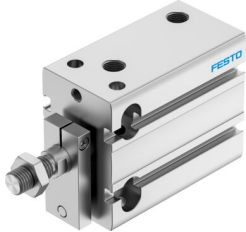


Compact cylinder DPDM-Q-32-30-PA

Part number: 4828470

FESTO



[PDF](#) General operating condition

Data sheet

| Feature | Value |
|---|--|
| Stroke | 30 mm |
| Piston diameter | 32 mm |
| Cushioning | Elastic cushioning rings/pads at both ends |
| Mounting position | Any |
| Mode of operation | Double-acting |
| Structural design | Piston Piston rod Profile barrel |
| Position sensing | For proximity sensor |
| Symbol | 00991737 |
| Variants | Piston rod at one end |
| Protection against torsion/guide | Guide rod with yoke |
| Operating pressure | 0.1 MPa ... 0.8 MPa |
| Operating pressure | 1 bar ... 8 bar |
| Operating medium | Compressed air as per ISO 8573-1:2010 [7:4:4] |
| Information on operating and pilot media | Operation with oil lubrication possible (required for further use) |
| Corrosion resistance class (CRC) | 2 - Moderate corrosion stress |
| LABS (PWIS) conformity | VDMA24364-B2-L |
| Cleanroom suitability, measured according to ISO 14644-14 | Class 6 according to ISO 14644-1 |
| Ambient temperature | -10 °C ... 80 °C |
| Theoretical force at 6 bar | 483 N |
| Theoretical force at 6 bar, retracting | 415 N |
| Theoretical force at 6 bar, advancing | 483 N |
| Moving mass at 0 mm stroke | 109 g |
| Additional moving mass per 10 mm stroke | 10.5 g |
| Basic weight with 0 mm stroke | 331 g |
| Additional weight per 10 mm stroke | 52.5 g |
| Type of mounting | With through-hole With internal thread |
| Pneumatic connection | G1/8 |
| Note on materials | RoHS-compliant |
| Cover material | Wrought aluminum alloy |
| Seals material | TPE-U(PU) |
| Housing material | Wrought aluminum alloy, anodized |
| Piston rod material | High-alloy stainless steel |