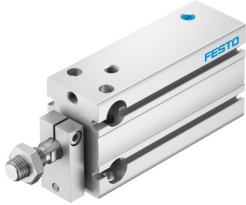


# Compact cylinder DPDM-Q-20-10-P-PA

Part number: 4840833

FESTO



[PDF](#) General operating condition

## Data sheet

| Feature   | Value  |
|---|--|
| Stroke  | 10 mm  |
| Piston diameter   | 20 mm  |
| Cushioning  | Elastic cushioning rings/pads at both ends                         |
| Mounting position   | Any  |
| Mode of operation   | Single-acting<br>Pulling   |
| Structural design   | Piston<br>Piston rod<br>Profile barrel                             |
| Position sensing  | For proximity sensor   |
| Symbol  | 00991733   |
| Variants  | Piston rod at one end  |
| Protection against torsion/guide                          | Guide rod with yoke  |
| Operating pressure  | 0.2 MPa ... 0.8 MPa  |
| Operating pressure  | 2 bar ... 8 bar  |
| Operating medium  | Compressed air as per ISO 8573-1:2010 [7:4:4]                      |
| Information on operating and pilot media                  | Operation with oil lubrication possible (required for further use) |
| Corrosion resistance class (CRC)                          | 2 - Moderate corrosion stress                                      |
| LABS (PWIS) conformity                                    | VDMA24364-B2-L   |
| Cleanroom suitability, measured according to ISO 14644-14 | Class 6 according to ISO 14644-1                                   |
| Ambient temperature                                       | -10 °C ... 80 °C   |
| Theoretical force at 6 bar, retracting                    | 130 N  |
| Theoretical force at 6 bar, advancing                     | 130 N  |
| Moving mass at 0 mm stroke                                | 46 g   |
| Additional moving mass per 10 mm stroke                   | 4.6 g  |
| Basic weight with 0 mm stroke                             | 140 g  |
| Additional weight per 10 mm stroke                        | 22.5 g   |
| Type of mounting  | With through-hole<br>With internal thread                          |
| Pneumatic connection                                      | M5   |
| Note on materials   | RoHS-compliant   |
| Cover material  | Wrought aluminum alloy   |
| Seals material  | TPE-U(PU)  |
| Housing material  | Wrought aluminum alloy, anodized                                   |
| Piston rod material                                       | High-alloy stainless steel   |