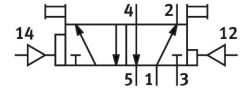
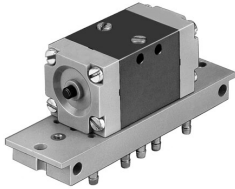


# Pneumatic valve JD-5-PK-3

Part number: 4901

FESTO



[General operating condition](#)

## Data sheet

Feature	Value
Valve function	5/2, bistable, dominant
Normal nominal flow rate (normalized to DIN 1343)	105 l/min
Pneumatic working port	PK-3
Operating pressure	1 bar ... 8 bar
Structural design	Plate seat
Nominal width	2.5 mm
Symbol	00991011
Changeover time	9 ms
Switching time changeover (dominant)	25 ms
Operating medium	Compressed air as per ISO 8573-1:2010 [7:-:-]
LABS (PWIS) conformity	VDMA24364-B1/B2-L
Ambient temperature	0 °C ... 60 °C
Product weight	130 g
Type of mounting	On sub-base On mounting frame With through-hole
Auxiliary pilot air port 12	PK-3
Auxiliary pilot air port 14	PK-3
Pneumatic connection 1	PK-3
Pneumatic connection 2	PK-3
Pneumatic connection 3	PK-3
Pneumatic connection 4	PK-3
Pneumatic connection 5	PK-3
Note on materials	RoHS-compliant
Material of sub-base	Brass PPS-reinforced
Seals material	NBR
Housing material	Die-cast zinc