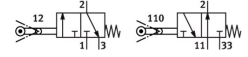


Swivel lever valve RW/O-3-1/8

Part number: 4937

FESTO



[PDF](#) General operating condition

Data sheet

Feature	Value
Valve function	3/2, open/closed, monostable
Actuation type	Mechanical
Normal nominal flow rate (normalized to DIN 1343)	140 l/min
Pneumatic working port	G1/8
Operating pressure	-0.95 bar ... 8 bar
Structural design	Piston seat
Nominal width	3.5 mm
Type of control	directly
Symbol	00991835
Explosion prevention and protection	Zone 1 (ATEX) Zone 2 (ATEX) Zone 21 (ATEX) Zone 22 (ATEX)
Operating medium	Compressed air as per ISO 8573-1:2010 [:-:-]
Information on operating and pilot media	Operation with oil lubrication possible (required for further use)
LABS (PWIS) conformity	VDMA24364-B1/B2-L
Ambient temperature	-10 °C ... 60 °C
Actuating force	28 N
Product weight	150 g
Type of mounting	With through-hole
Pneumatic connection 1	G1/8
Pneumatic connection 2	G1/8
Pneumatic connection 3	G1/8
Seals material	NBR
Housing material	Anodized aluminum