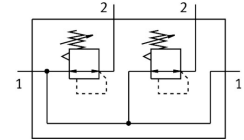


# Pressure regulator manifold LRB-1/2-D-O-K2-MIDI

Part number: 528959

FESTO



[PDF General operating condition](#)

## Data sheet

| Feature   | Value   |
|---|---|
| Size  | Midi  |
| Series  | D   |
| Actuator lock                                     | Rotary knob with detent   |
| Mounting position                                 | Any   |
| Structural design                                 | Directly controlled diaphragm regulator with continuous compressed air supply               |
| Controller function                               | Outlet pressure constant<br>With primary pressure compensation<br>With secondary exhausting |
| Symbol  | 00995331  |
| Pressure gauge                                    | G1/4 prepared   |
| Operating pressure                                | 0.1 MPa ... 1.6 MPa   |
| Operating pressure                                | 1 bar ... 16 bar  |
| Pressure regulation range MPa                     | 0.05 MPa ... 1.2 MPa  |
| Pressure regulation range                         | 0.5 bar ... 12 bar  |
| Pressure regulation range psi                     | 7.25 psi ... 174 psi  |
| Max. pressure hysteresis                          | 0.02 MPa  |
| Max. pressure hysteresis                          | 0.2 bar   |
| Max. pressure hysteresis                          | 2.9 psi   |
| Normal nominal flow rate (normalized to DIN 1343) | 3200 l/min  |
| Operating medium                                  | Compressed air as per ISO 8573-1:2010 [7:4:4]   |
| LABS (PWIS) conformity                            | VDMA24364-B1/B2-L   |
| Air quality class at the output                   | Compressed air as per ISO 8573-1:2010 [7:4:4]   |
| Temperature of medium                             | -10 °C ... 60 °C  |
| Ambient temperature                               | -10 °C ... 60 °C  |
| Product weight                                    | 1950 g  |
| Type of mounting                                  | With accessories  |
| Pneumatic connection 1                            | G1/2  |
| Pneumatic connection 2                            | G3/8  |
| Material of sub-base                              | Die-cast zinc   |
| Material of operator panel                        | PA  |
| Seals material                                    | NBR   |
| Housing material                                  | Die-cast zinc   |