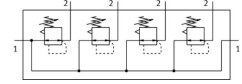


Pressure regulator manifold LRB-1/2-D-7-O-K4-MIDI

Part number: 528989

FESTO



 General operating condition

Data sheet

Feature	Value
Size	Midi
Series	D
Actuator lock	Rotary knob with detent
Mounting position	Any
Structural design	Directly controlled diaphragm regulator with continuous compressed air supply
Controller function	Outlet pressure constant With primary pressure compensation With secondary exhausting
Symbol	00995333
Pressure gauge	G1/4 prepared
Operating pressure	0.1 MPa ... 1.6 MPa
Operating pressure	1 bar ... 16 bar
Pressure regulation range MPa	0.05 MPa ... 0.7 MPa
Pressure regulation range	0.5 bar ... 7 bar
Pressure regulation range psi	7.25 psi ... 101.5 psi
Max. pressure hysteresis	0.02 MPa
Max. pressure hysteresis	0.2 bar
Max. pressure hysteresis	2.9 psi
Normal nominal flow rate (normalized to DIN 1343)	3800 l/min
Operating medium	Compressed air as per ISO 8573-1:2010 [7:4:4]
LABS (PWIS) conformity	VDMA24364-B1/B2-L
Air quality class at the output	Compressed air as per ISO 8573-1:2010 [7:4:4]
Temperature of medium	-10 °C ... 60 °C
Ambient temperature	-10 °C ... 60 °C
Product weight	3834 g
Type of mounting	With accessories
Pneumatic connection 1	G1/2
Pneumatic connection 2	G3/8
Material of sub-base	Die-cast zinc
Material of operator panel	PA
Seals material	NBR
Housing material	Die-cast zinc