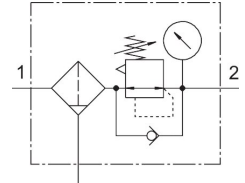


Filter regulator MS6-LFR-3/8-D6-CRM-AS

Part number: 529216

FESTO



 General operating condition

Data sheet

Feature	Value
Size	6
Series	MS
Actuator lock	Rotary knob with detent can be closed with accessories
Mounting position	Vertical $\pm 5^\circ$
Grade of filtration	5 μm
Condensate drain	Manual, rotating
Structural design	Filter regulator with pressure gauge
Max. condensate volume	38 ml
Controller function	Constant output pressure With secondary exhausting
Bowl guard	Plastic bowl guard
Degree of condensate separation	$>75\%$
Symbol	00991589
Pressure gauge	with pressure gauge
Operating pressure	0.08 MPa ... 2 MPa
Operating pressure	0.8 bar ... 20 bar
Pressure regulation range	0.3 bar ... 7 bar
Max. pressure hysteresis	0.025 MPa
Max. pressure hysteresis	0.25 bar
Max. pressure hysteresis	3.625 psi
Normal nominal flow rate (normalized to DIN 1343)	5000 l/min
Operating medium	Inert gases
Corrosion resistance class (CRC)	2 - Moderate corrosion stress
LABS (PWIS) conformity	VDMA24364-B1/B2-L
Storage temperature	-10 °C ... 60 °C
For use in the food industry	See supplementary material information
Air quality class at the output	Compressed air as per ISO 8573-1:2010 [6:4:4]
Temperature of medium	-10 °C ... 60 °C
Ambient temperature	-10 °C ... 60 °C
Pore size	$<5\ \mu\text{m}$
Product weight	875 g
Type of mounting	With accessories
Pneumatic connection 1	G3/8
Pneumatic connection 2	G3/8

Feature	Value
Note on materials	RoHS compliant
Material of operator panel	PA POM
Seals material	NBR
Compressed air filter material	Protective grounding
Housing material	Die-cast aluminum
Diaphragm material	NBR
Material of bowl	PC
Separating disc material	POM