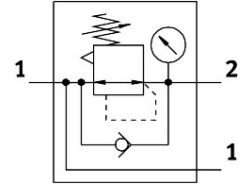


Pressure regulator MS4-LRB-1/4-D6-AS

Part number: 529479

FESTO



[PDF](#) General operating condition

Data sheet

Feature	Value
Size	4
Series	MS
Actuator lock	Rotary knob with detent can be closed with accessories
Mounting position	Any
Structural design	Directly controlled diaphragm regulator with continuous compressed air supply
Controller function	Constant output pressure With primary pressure compensation With secondary exhausting With return flow characteristic
Symbol	00995251
Pressure gauge	with pressure gauge
Operating pressure	0.8 bar ... 14 bar
Pressure regulation range	0.3 bar ... 7 bar
Max. pressure hysteresis	0.25 bar
Normal nominal flow rate (normalized to DIN 1343)	1700 l/min
Operating medium	Compressed air as per ISO 8573-1:2010 [7:4:4] Inert gases
Information on operating and pilot media	Operation with oil lubrication possible (required for further use)
Corrosion resistance class (CRC)	2 - Moderate corrosion stress
LABS (PWIS) conformity	VDMA24364-B1/B2-L
Storage temperature	-10 °C ... 60 °C
For use in the food industry	See supplementary material information
Temperature of medium	-10 °C ... 60 °C
Ambient temperature	-10 °C ... 60 °C
Product weight	222 g
Type of mounting	With accessories
Pneumatic connection 1	G1/4
Pneumatic connection 2	G1/4
Note on materials	RoHS compliant
Material of sub-base	Die-cast aluminum
Material of operator panel	PA POM
Seals material	NBR
Housing material	Die-cast aluminum

Feature	Value
Diaphragm material	NBR