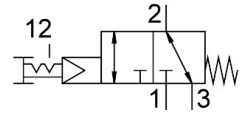


Pushbutton valve VHEF-PTC-B32-G18

Part number: 5299707

FESTO



General operating condition

Data sheet

| Feature | Value |
|---|--|
| Valve function | 3/2, bistable |
| Actuation type | Manual |
| Width | 20 mm |
| Normal nominal flow rate (normalized to DIN 1343) | 750 l/min |
| Pneumatic working port | G1/8 |
| Operating pressure | 0.35 MPa ... 1 MPa |
| Operating pressure | 3.5 bar ... 10 bar |
| Structural design | Plate seat |
| Nominal width | 5.6 mm |
| Exhaust air function | With flow control option |
| Application note | Operate by hand only |
| Sealing principle | Soft |
| Mounting position | Any |
| Manual override | Detenting |
| Type of control | Pilot-controlled |
| Pilot air supply port | Internal |
| Flow direction | Reversible |
| Symbol | 00995885 |
| Lap | Zero overlap |
| Pilot pressure MPa | 0.35 MPa ... 1 MPa |
| Pilot pressure | 3.5 bar ... 10 bar |
| Pilot pressure psi | 50.75 psi ... 145 psi |
| Max. switching frequency | 0.5 Hz |
| Explosion prevention and protection | Zone 1 (ATEX) Zone 2 (ATEX) Zone 21 (ATEX) Zone 22 (ATEX) |
| Operating medium | Compressed air as per ISO 8573-1:2010 [7:-:-] |
| Information on operating and pilot media | Operation with oil lubrication possible (required for further use) |
| Corrosion resistance class (CRC) | 1 - Low corrosion stress |
| LABS (PWIS) conformity | VDMA24364-B1/B2-L |
| Temperature of medium | -10 °C ... 60 °C |
| Ambient temperature | -10 °C ... 60 °C |
| Actuating force | 20 N |
| Release force | 25 N |
| Product weight | 168 g |

| Feature | Value |
|------------------------|----------------------------------|
| Type of mounting | With through-hole |
| Pneumatic connection 1 | G1/8 |
| Pneumatic connection 2 | G1/8 |
| Pneumatic connection 3 | G1/8 |
| Note on materials | RoHS-compliant |
| Cover material | PA-reinforced |
| Seals material | NBR |
| Housing material | Wrought aluminum alloy, anodized |