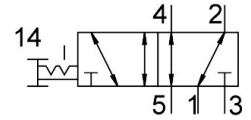


# Pushbutton valve VHEF-P-B52-G18

Part number: 5299710

FESTO



 General operating condition

## Data sheet

| Feature   | Value  |
|---|--|
| Valve function                                    | 5/2, bistable  |
| Actuation type                                    | Manual   |
| Width   | 20 mm  |
| Normal nominal flow rate (normalized to DIN 1343) | 750 l/min  |
| Pneumatic working port                            | G1/8   |
| Operating pressure                                | -0.095 MPa ... 1 MPa   |
| Operating pressure                                | -0.95 bar ... 10 bar   |
| Structural design                                 | Piston gate valve  |
| Nominal width                                     | 5.2 mm   |
| Exhaust air function                              | With flow control option   |
| Application note                                  | Operate by hand only   |
| Sealing principle                                 | Soft   |
| Mounting position                                 | Any  |
| Manual override                                   | Detenting  |
| Type of control                                   | Direct   |
| Flow direction                                    | Reversible   |
| Symbol  | 00995878   |
| Lap   | Overlap  |
| Max. switching frequency                          | 0.5 Hz   |
| Explosion prevention and protection               | Zone 1 (ATEX)<br>Zone 2 (ATEX)<br>Zone 21 (ATEX)<br>Zone 22 (ATEX) |
| Operating medium                                  | Compressed air as per ISO 8573-1:2010 [7:-:-]                      |
| Information on operating and pilot media          | Operation with oil lubrication possible (required for further use) |
| Corrosion resistance class (CRC)                  | 1 - Low corrosion stress   |
| LABS (PWIS) conformity                            | VDMA24364-B1/B2-L  |
| Temperature of medium                             | -10 °C ... 60 °C   |
| Ambient temperature                               | -10 °C ... 60 °C   |
| Actuating force                                   | 20 N   |
| Release force                                     | 35 N   |
| Product weight                                    | 182 g  |
| Type of mounting                                  | With through-hole  |
| Pneumatic connection 1                            | G1/8   |
| Pneumatic connection 2                            | G1/8   |
| Pneumatic connection 3                            | G1/8   |

| <b>Feature</b>         | <b>Value</b>                     |
|------------------------|----------------------------------|
| Pneumatic connection 4 | G1/8                             |
| Pneumatic connection 5 | G1/8                             |
| Note on materials      | RoHS-compliant                   |
| Cover material         | PA-reinforced                    |
| Seals material         | NBR                              |
| Housing material       | Wrought aluminum alloy, anodized |