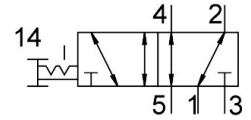


Pushbutton valve VHEF-P-B52-N18

Part number: 5299722

FESTO



 General operating condition

Data sheet

Feature	Value
Valve function	5/2, bistable
Actuation type	Manual
Width	20 mm
Normal nominal flow rate (normalized to DIN 1343)	750 l/min
Pneumatic working port	1/8 NPT
Operating pressure	-0.095 MPa ... 1 MPa
Operating pressure	-0.95 bar ... 10 bar
Structural design	Piston gate valve
Nominal width	5.2 mm
Exhaust air function	With flow control option
Application note	Operate by hand only
Sealing principle	Soft
Mounting position	Any
Manual override	Detenting
Type of control	Direct
Flow direction	Reversible
Symbol	00995878
Lap	Overlap
Max. switching frequency	0.5 Hz
Explosion prevention and protection	Zone 1 (ATEX) Zone 2 (ATEX) Zone 21 (ATEX) Zone 22 (ATEX)
Operating medium	Compressed air as per ISO 8573-1:2010 [7:-:-]
Information on operating and pilot media	Operation with oil lubrication possible (required for further use)
Corrosion resistance class (CRC)	1 - Low corrosion stress
LABS (PWIS) conformity	VDMA24364-B1/B2-L
Temperature of medium	-10 °C ... 60 °C
Ambient temperature	-10 °C ... 60 °C
Actuating force	20 N
Release force	35 N
Product weight	182 g
Type of mounting	With through-hole
Pneumatic connection 1	1/8 NPT
Pneumatic connection 2	1/8 NPT
Pneumatic connection 3	1/8 NPT

Feature	Value
Pneumatic connection 4	1/8 NPT
Pneumatic connection 5	1/8 NPT
Note on materials	RoHS-compliant
Cover material	PA-reinforced
Seals material	NBR
Housing material	Wrought aluminum alloy, anodized